

QUIZ 2

A 50 year old man with a history of renal transplant in 1985 secondary to end-stage diabetic renal disease. He was hospitalized in April, 1997 for mild organ rejection. One month later, the patient presented with fever, fatigue, and a skin eruption. The lesions were tender and associated with moderate edema (See Figures 1 & 2 of Quiz 2). Histologic examination of the skin biopsy is shown in Figure 3 of Quiz 2.



Figure 1 : of Quiz 2

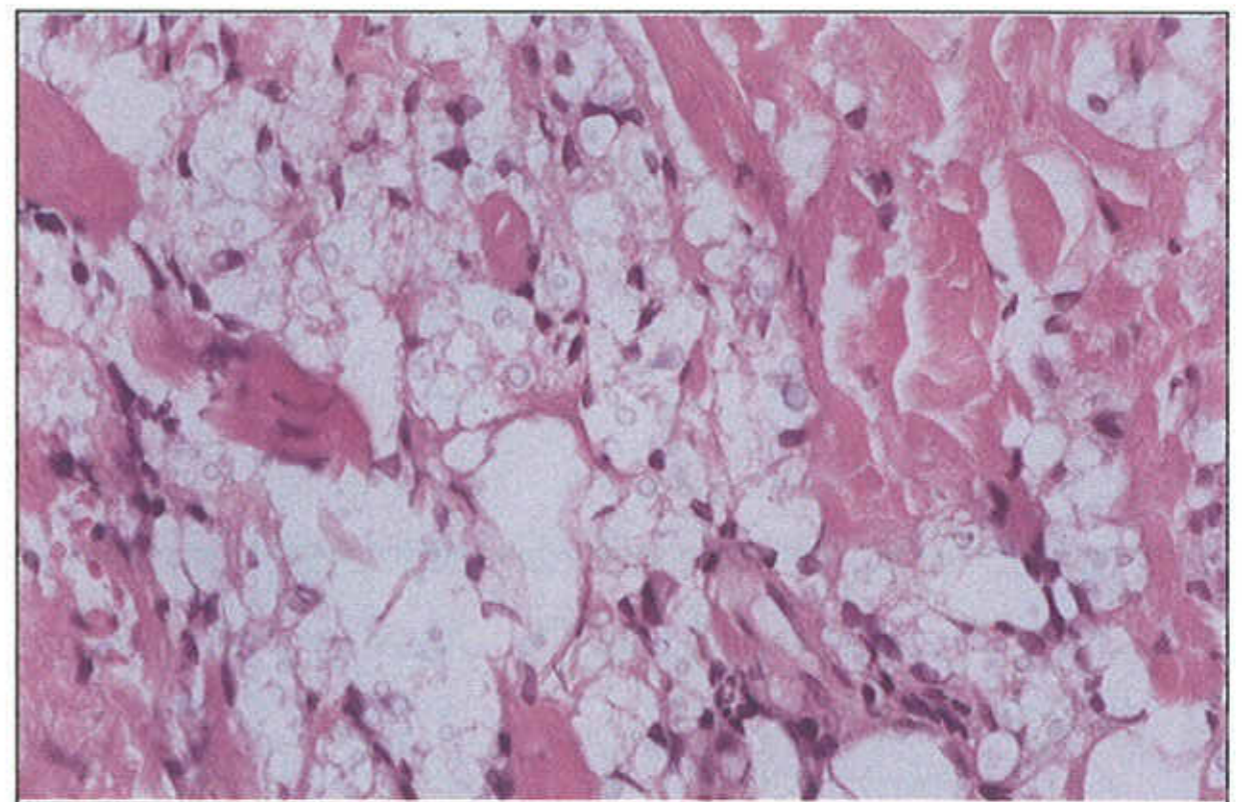


Figure 3 : of Quiz 2



Figure 2 : of Quiz 2

What is your diagnosis ?