

QUIZ 1

**Bahram Azadeh MD, FRCPath,
Fahad Abdulla MD**

Departments of Pathology and Dermatology,
Hamad Medical Corporation,
P.O. Box 3050,
Doha, State of Qatar.

QUIZ 1.

Figures 1-4 illustrate hematoxylin and eosin stained sections of an ulcerated and crusted lesion (10 x 10 mm), of four months duration, on the left elbow of a 30-year-old Egyptian man.

WHAT IS YOUR DIGNOSIS?

Answer on page 52



Fig. 1. Low power view of the skin biopsy.

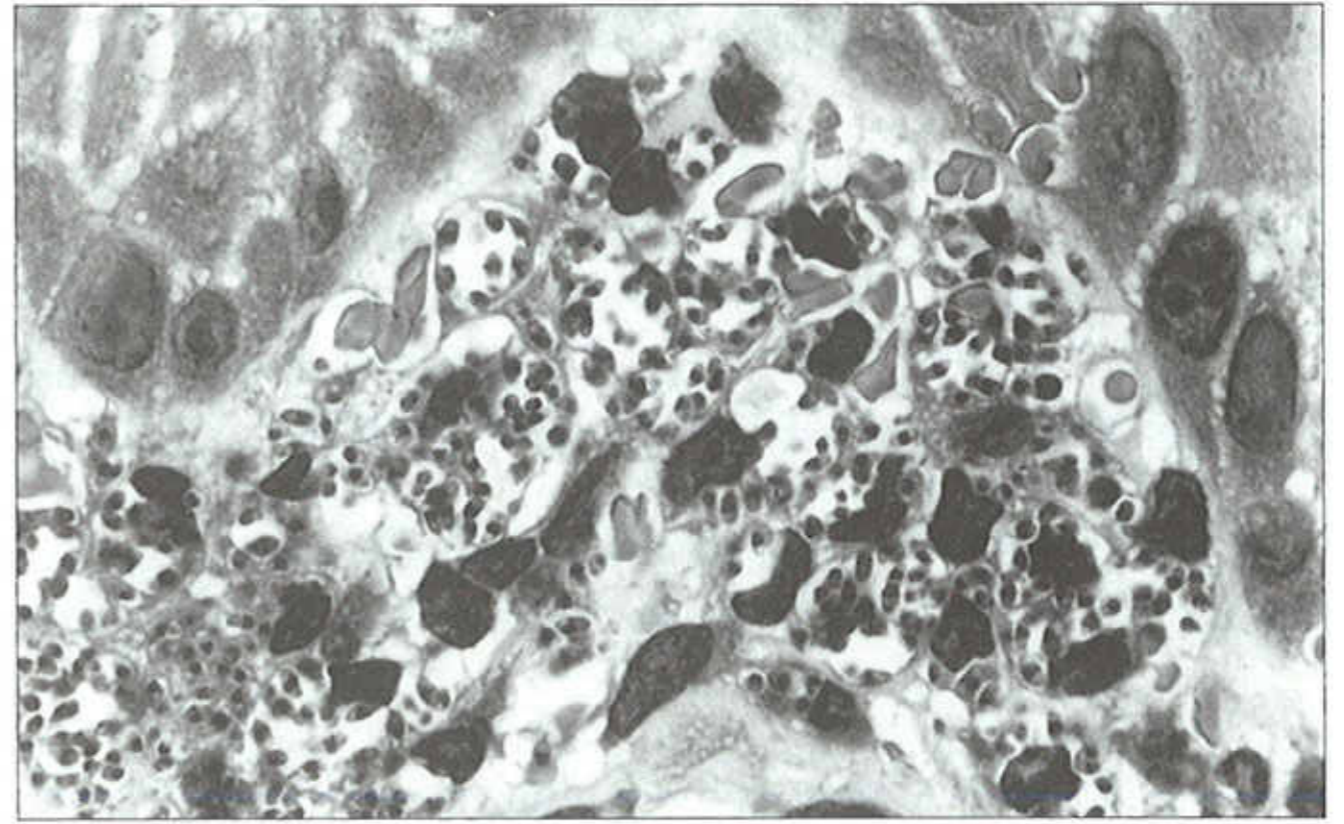


Fig. 3. High power showing basal zone and papillary dermis

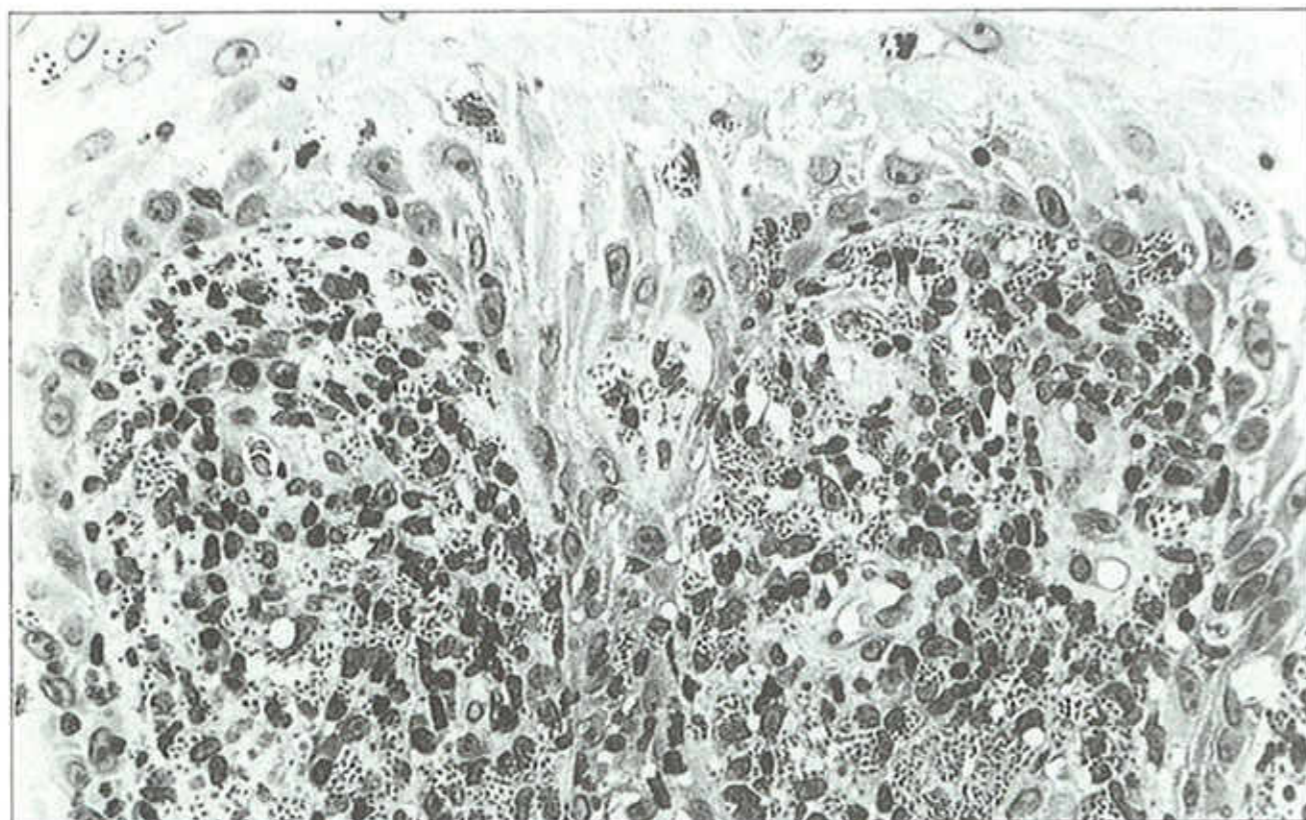


Fig. 2. Medium power showing parts of the epidermis and upper dermis.

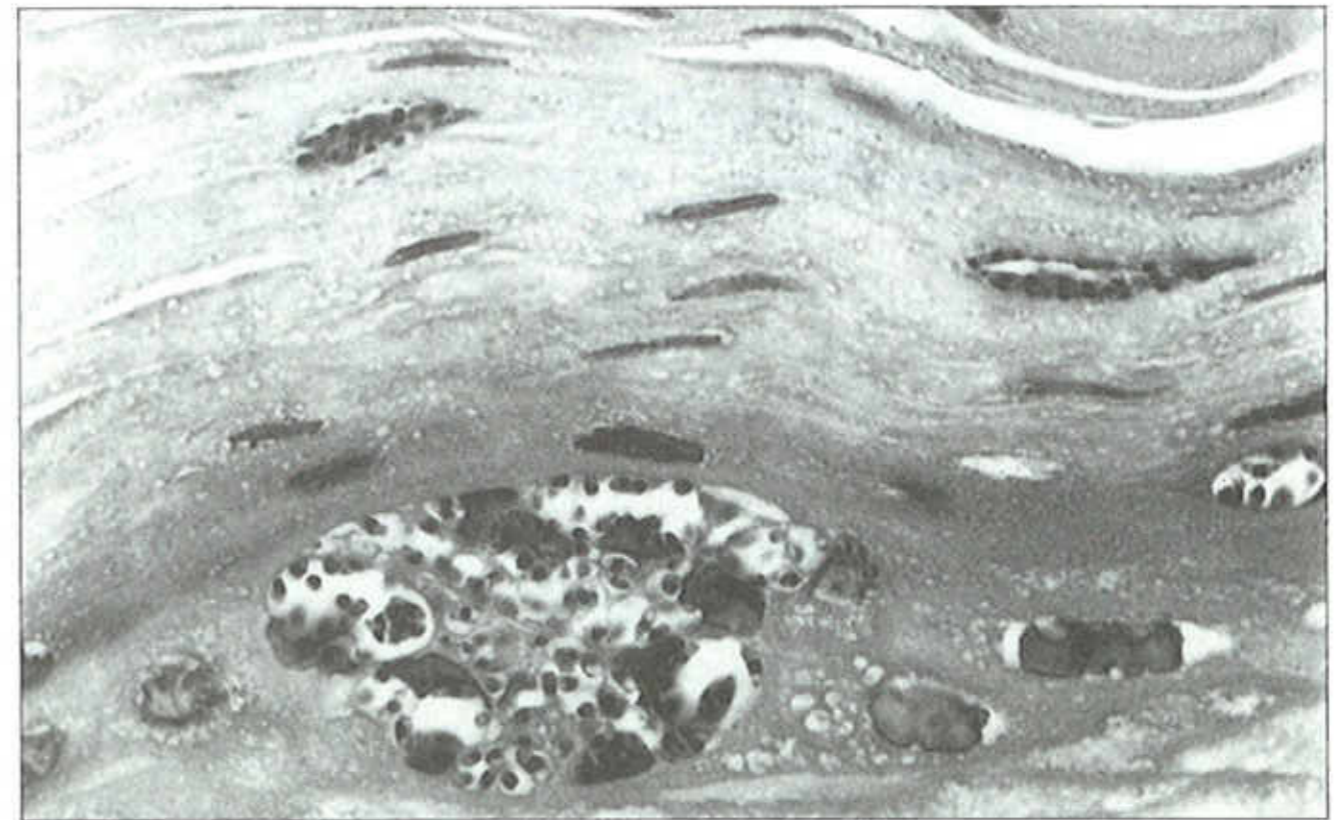


Fig. 4. High power of the parakeratotic layers